



UNI EN ISO 9001:2008
Quality System Certified Company



TECHNICAL DATA SHEET

PRODUCT

NATURAL WAX

EMULSIFIED CREAM POLISHING WAX

The use of the wax is the oldest aesthetic-protecting treatment for marbles, granites, natural stones; the wax protects the underneath material from abrasions, scratches, infiltrations and properly "worked" (rubbing-polishing operation) revives the colours and gives the surfaces shining and reflecting. So, also today the use of the wax let us see the fascination that marbles and granites of the most amazing palaces of the ancient times have.

NATURAL WAX is suggested for all kind of natural stone having high, medium and low porosity and absorption as it develops impermeable and reviving effect, hides light imperfections and enhances the veining so the stones are more beautiful without any change or alteration of the natural aspect. The presence of hard waxes allows to obtain very glossy surfaces. .

When compared to the fluid waxes, the paste waxes have a higher concentration of active substance (wax), the presence of water is lower and consequently the drying times are shorter and by using the paste waxes also the vertical surfaces will be shining.

FUNCTION

POLISHING and PROTECTING

LINE

PROTECTION

PROFESSIONAL and HOUSE

INDICATION

SUITABLE FOR ALL THE SURFACES THAT WANT TO BE POLISHED AND PROTECTED WITH A WAXY FILM

MATERIALS

ANY KIND OF SURFACE EVEN POROUS. EXPRESSLY STUDIED AND FORNULATED FOR MARBLES, GRANITES AND NATURAL AND ARTIFICIAL STONES IT CAN BE APPLIED ALSO AN WOOD AND PLASTIC MATERIALS.

HOW TO USE

APPLICATION:

1. Spread a wax layer with a cotton cloth with rotating motion and passing more times on the same points.
2. Verify the wax is spread evenly on the surface.
Wait for the complete drying and then polish.

POLISHING:

The best results are obtained by using professional polishing machines (single-brush machine); good results also by using a house buffing machine equipped with polishing felts. On small surfaces the polishing can be made by hand with a clean cotton cloth or, better, a woollen cloth.

TEST

On a small, hidden area, before application, always effect a preliminary test to determine consumption, drying time and, after drying, to verify appearance

COMPOSITION

WATER BASED EMULSION OF NATURAL WAXES

TECHNICAL DATA

DRYING TIME: 5-12 minutes (according to environmental conditions: temperature, humidity, ventilation etc.).

ESTIMATED CONSUMPTION: 50 - 150 gr/m² (according to material porosity and the required glossy degree).

STABILITY

Do not store at temperature lower than 5°C (41°F) and higher than 35°C (95°F)

The product *CANNOT STAND THE FROST*

PACKAGING

can of 750 ml.



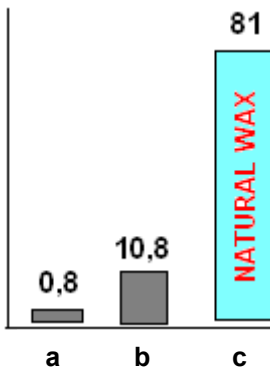
MAINTENANCE

The application of a wax protects, revives and polishes in long lasting way the stone materials Too much frequent applications of NATURAL WAX could be make accumulating of product on the surface so it is suggested the periodic maintenance by applying a minimum quantity of product.

To restore the original glossy of the floors treated by NATURAL WAX the frequent use of **Risplend** (quick and efficacious wash-n-wax product) is suggested.

TECHNICAL DATA

BRIGHTNESS

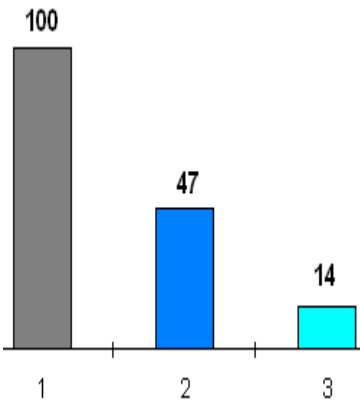


Metering effected with a glossmeter 500 (60° angle) on polished granite show brightness increases over 700%

Checked average values:

- a) Not polished and not treated granite.....0.8
- b) Not treated polished granite.....10.8
- c) Polished granite with waxed surface (with MONOCERA NATURAL WAX)81.0

ABSORPTION (anti-infiltration effect)



The water absorption on polished and waxed marble is reduced to less than a third part (14 on 47), as per under specified absorption values:

Checked average values:

- 1) Not polished, not treated Carrara marble.....38.5g = **100%**
- 2) Not treated but polished Carrara marble.....18.1g = **47%**
- 3) Polished and "waxed" Carrara marble.....5.4g = **14%**

IMPORTANT

NATURAL WAX IS A SYNERGIC COMPOSITION OF SEVERAL WAXES. ON THE SURFACE IT REMAINS A THIN FILM WELL ADHERING AND EASY TO POLISH. APPLY ALWAYS ON CLEAN AND DRY SURFACES. THE PRODUCT **CANNOT STAND THE FROST**, AVOID STORAGE AT TEMPERATURE LOWER THAN 5°C (41°F) AND HIGHER THAN 35°C (95°F)

LIMITATION OF LIABILITY The data provided derive from published information or from our own laboratory tests. The information provided here must be considered as a guideline and not as any form of performance guarantee. Liability for defective products, when verified, is limited to refund of the purchase price since the application of the product is beyond the control of the manufacturer or supplier.

BEFORE THE APPLICATION ALWAYS EFFECT A PRELIMINARY TEST ON A SMALL, HIDDEN PART OF THE SURFACE